

# BRUDENELL WALTZ

2nd Violin

D R Bellwood

Musical notation for the 2nd Violin part, measures 1-8. The key signature is one sharp (F#) and the time signature is 3/4. The first staff contains a melody of quarter notes: G4, A4, B4, C5, B4, A4, G4, F#4. The second staff contains a rhythmic accompaniment of eighth notes: G4, A4, B4, C5, B4, A4, G4, F#4, G4, A4, B4, C5, B4, A4, G4, F#4.

3rd Violin

Musical notation for the 3rd Violin part, measures 1-8. The key signature is one sharp (F#) and the time signature is 3/4. The first staff contains a melody of quarter notes: G4, A4, B4, C5, B4, A4, G4, F#4. The second staff contains a rhythmic accompaniment of eighth notes: G4, A4, B4, C5, B4, A4, G4, F#4, G4, A4, B4, C5, B4, A4, G4, F#4.

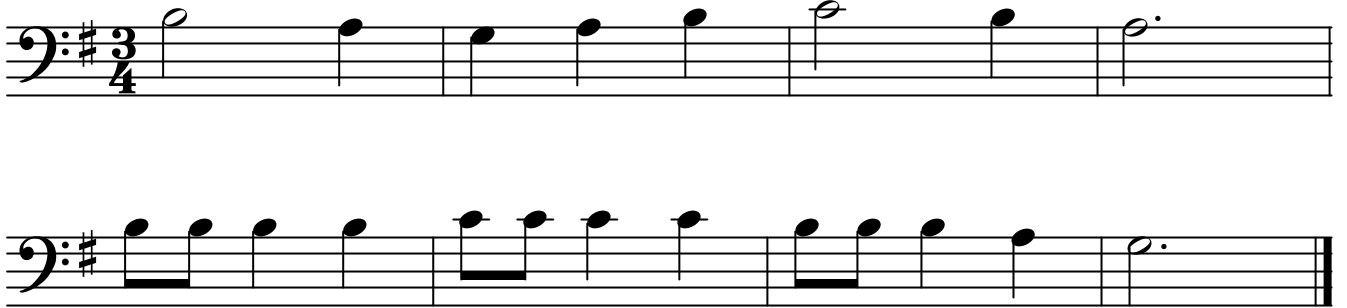
Open String Violin

Musical notation for the Open String Violin part, measures 1-8. The key signature is one sharp (F#) and the time signature is 3/4. The first staff contains a melody of quarter notes: G4, F#4, G4, F#4. The second staff contains a rhythmic accompaniment of eighth notes: G4, F#4, G4, F#4, G4, F#4, G4, F#4, G4, F#4, G4, F#4, G4, F#4, G4, F#4.

# BRUDENELL WALTZ

Cello Melody

D R Bellwood



Musical notation for the Cello Melody, consisting of two staves in bass clef with a key signature of one sharp (F#) and a 3/4 time signature. The melody is written in a simple, flowing style with quarter and eighth notes.

Harmony



Musical notation for the Harmony, consisting of two staves in bass clef with a key signature of one sharp (F#) and a 3/4 time signature. The harmony is written in a simple, flowing style with quarter and eighth notes.

Bass Line



Musical notation for the Bass Line, consisting of two staves in bass clef with a key signature of one sharp (F#) and a 3/4 time signature. The bass line is written in a simple, flowing style with quarter and eighth notes.

# BRUDENELL WALTZ

1st Violin

D R Bellwood

Musical notation for the 1st Violin part. The score consists of two staves. The first staff begins with a treble clef, a key signature of one sharp (F#), and a 3/4 time signature. It contains four measures of music: a half note G4, a quarter note A4, a quarter note B4, and a dotted half note C5. The second staff continues with four measures: a quarter note D5, a quarter note E5, a quarter note F#5, and a dotted half note G5. The piece concludes with a double bar line.

Alternative Violin Part

Musical notation for the Alternative Violin Part. The score consists of two staves. The first staff begins with a treble clef, a key signature of one sharp (F#), and a 3/4 time signature. It contains four measures of music: a half note G4, a quarter note A4, a quarter note B4, and a dotted half note C5. The second staff continues with four measures: a quarter note D5, a quarter note E5, a quarter note F#5, and a dotted half note G5. The piece concludes with a double bar line.

Advanced Violin

Musical notation for the Advanced Violin part. The score consists of two staves. The first staff begins with a treble clef, a key signature of one sharp (F#), and a 3/4 time signature. It contains eight measures of music: quarter notes G4, A4, B4, C5, quarter notes D5, E5, F#5, and a dotted half note G5. The second staff continues with eight measures: quarter notes G5, F#5, E5, D5, quarter notes C5, B4, A4, and a dotted half note G4. The piece concludes with a double bar line.

# BRUDENELL WALTZ

D R Bellwood

## 1st Clarinet in Bb

Two staves of musical notation for the 1st Clarinet in Bb. The music is in treble clef, key of A major (three sharps), and 3/4 time. The first staff contains four measures of music, and the second staff contains four measures, ending with a double bar line.

## 2nd Clarinet in Bb

Two staves of musical notation for the 2nd Clarinet in Bb. The music is in treble clef, key of A major (three sharps), and 3/4 time. The first staff contains four measures of music, and the second staff contains four measures, ending with a double bar line.

## 3rd Clarinet in Bb

Two staves of musical notation for the 3rd Clarinet in Bb. The music is in treble clef, key of A major (three sharps), and 3/4 time. The first staff contains four measures of music, and the second staff contains four measures, ending with a double bar line.

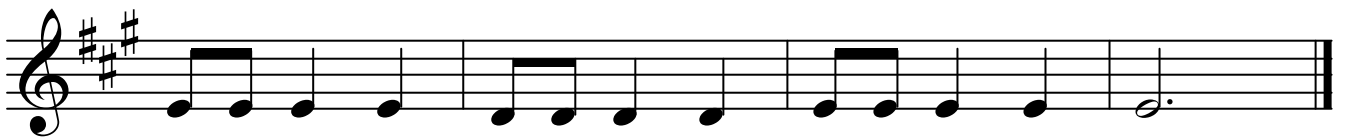
# BRUDENELL WALTZ

D R Bellwood

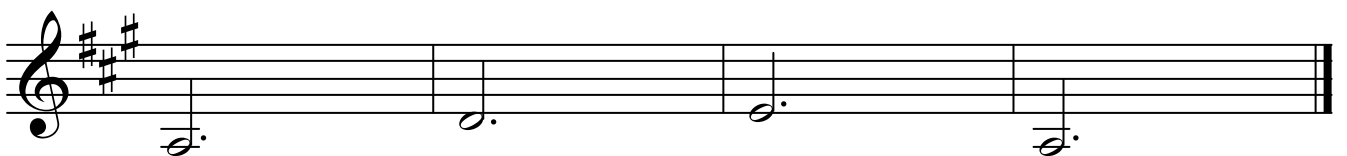
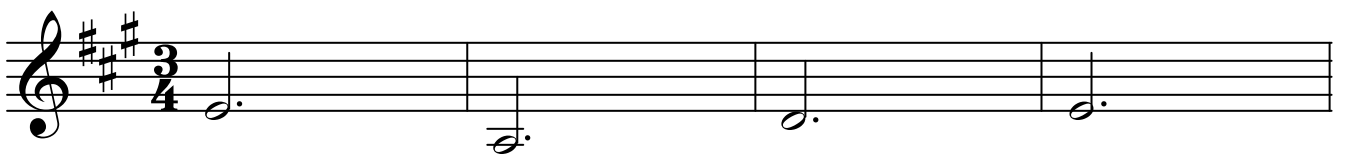
## 2nd Clarinet in Bb



## 3rd Clarinet in Bb



## Easy Clarinet



# BRUDENELL WALTZ

D R Bellwood

## 1st Flute

Musical notation for the 1st Flute part, consisting of two staves. The key signature is one sharp (F#) and the time signature is 3/4. The first staff begins with a treble clef, a sharp sign, and a 3/4 time signature. The melody consists of quarter notes: G4, A4, B4, C5, D5, E5, F#5, G5, followed by a dotted quarter note G5. The second staff continues the melody with eighth notes: G4, A4, B4, C5, D5, E5, F#5, G5, A5, B5, C6, D6, E6, F#6, G6, followed by a dotted quarter note G6.

## 2nd Flute

Musical notation for the 2nd Flute part, consisting of two staves. The key signature is one sharp (F#) and the time signature is 3/4. The first staff begins with a treble clef, a sharp sign, and a 3/4 time signature. The melody consists of quarter notes: G4, A4, B4, C5, D5, E5, F#5, G5, followed by a dotted quarter note G5. The second staff continues the melody with eighth notes: G4, A4, B4, C5, D5, E5, F#5, G5, A5, B5, C6, D6, E6, F#6, G6, followed by a dotted quarter note G6.

## Alternative part

Musical notation for the Alternative part, consisting of two staves. The key signature is one sharp (F#) and the time signature is 3/4. The first staff begins with a treble clef, a sharp sign, and a 3/4 time signature. The melody consists of quarter notes: G4, A4, B4, C5, D5, E5, F#5, G5, followed by a dotted quarter note G5. The second staff continues the melody with eighth notes: G4, A4, B4, C5, D5, E5, F#5, G5, A5, B5, C6, D6, E6, F#6, G6, followed by a dotted quarter note G6.